





1.Parameters

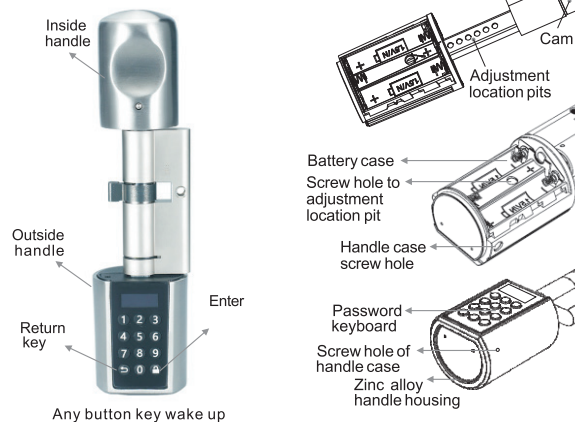
Applicable place	Security door, Main entrance, Wooden door, Glass door
Applicable door thickness	55~105MM
Work temperature	-25°C - 60°C
Pressing cycle times	100 thousand times
Knob material	Zinc Alloy
Unlock way	Password unlock, Card unlock, Bluetooth unlock
Battery Type	AAA battery*3
Power input	3.6V - 4.8V
Battery replacement	Replaceable
Body color	Silver (Hairline)
Battery life	> 1 year

2.Parts List:

Name	Quantity	Image
Bluetooth/ Password/ Card EI Cylinder	1	
Allen Key	2	
Smart Card	3	
Manual	1	

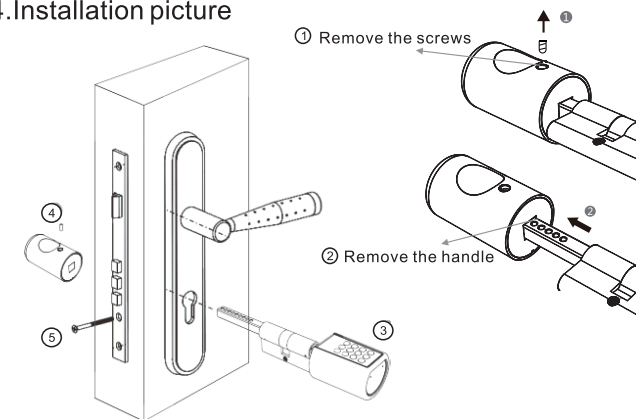
Remarks: Scan the QR code stuck on battery box cover or packaging box flap to bind the lock cylinder to your smart phone app.
DO NOT THROW!

3.Operating Area



Password & Card Bluetooth Smart Door Lock Cylinder

4.Installation picture



- ① Remove the handle screw.
- ② Remove the handle.
- ③ the lock cylinder is loaded from the lock hole outside the door.
- ④ After the handle installed.
- ⑤ loaded cylinder fixing screw.

(1).Modify the admin password

Press any key to activate +123456+

Input new password+ +new password +, A green light indicates that the modification was successful. **Please DO keep in mind your admin password!**

(2).Enter the management menu

Any key wake up + Admin password +

If the management password has not been modified, go directly to the Modify Management Password menu. Any operation needs to be done after modifying the administrator password. Different numeric keypads represent different functions. Keyboard ↵ Back or Cancel, Keyboard ⏹ Confirm.

(3).Unlock

Press any key to wake up + password

The consecutive password failed 5 times, and the system could not be operated for three minutes. Support for adding any number before and after the correct password. The total length of the password is not more than 30 digits.

Press any key to wake up + 10 temporary password

The continuous password fails 5 times, the system cannot be operated for three minutes, and the temporary password is generated in the App. Temporary password usage time range and local time will have small errors, must be in the lock cylinder time range.

Any key wake up + swipe

After 5 consecutive errors in the card, the system cannot be operated for three minutes. Unadded cards in the factory state can recognize unlocking.

App lock and click to unlock

After the App binds the lock, connect to the lock via Bluetooth, click the unlock button in the App to unlock, and the phone time will be synchronized to the lock via Bluetooth.

Password & Card Bluetooth Smart Door Lock Cylinder

Bluetooth remote unlock, press Bluetooth remote control

After adding the Bluetooth remote control, press the Bluetooth remote control button to unlock. Realize short-range unlocking within 5 meters.

(4).Channel mode

Enter the same unlock password correctly twice in succession. After channel mode, enter the unlock password again to close the channel mode.

After the channel mode is turned on, the lock cylinder motor is not automatically locked, the lock cylinder is always open, and the channel mode needs to be manually closed to restore the lock.

(5).Battery icon

Display the current battery lock

The battery icon is only black after the middle of the frame. The battery voltage is insufficient to provide motor operation. Please replace the battery as soon as possible.

(6).Time

Display the current time of the lock cylinder

Time synchronization requires the binding lock in the App to do the App unlock operation, time synchronization of the current time of the mobile phone, need to resynchronize the time after power off, the default time is 2018-01-01 12:00

(7).1+set password

1+ Modify Admin password

Modify the admin password, only one admin password can be set.

2+ Add user password

9 user password can be added, can be 6-12 digits, after the addition is successful, The screen number is displayed as the number of the currently added password user. Please keep in mind that it will be used when deleting.

3+ Delete user password

The user enters the number of the password user to be deleted, and press to confirm the deletion.

4+ Empty user password

According to the prompt, the user enters "1+" to confirm clearing all common passwords. Press or enter another number key + cancel operation.

(8).2+ Set IC card

1+ Register IC card

Add up to 20 We.lock IC cards. When adding, please swipe the card within 10 seconds. The timeout is invalid. After the addition is successful, the screen number is the number of the current card user in the lock. Please keep in mind that it can be used when deleting. The IC card can be registered continuously until the capacity is full, or press the button to exit, or automatically exit when an error is encountered.

2+ Delete IC card

The user enters the number of the IC card to be deleted in the lock cylinder, and press to confirm the deletion.

3+ Clear IC card

According to the prompt, the user inputs "1+", clears all IC card records in the lock cylinder, press key or enter other number keys + cancel operation.

(9).3+ Bluetooth remote control

1+ Add Bluetooth remote control

"Add up to 8 Bluetooth remote control, press the Bluetooth remote control unlock button within 60s, add successfully, The screen displays the number as the number of the Bluetooth remote control in the lock. Please remember that the deletion will be used.

2+ Delete Bluetooth remote control

User input the number of the Bluetooth remote control to be deleted in the lock cylinder, press to confirm deletion.

3+ Clear Bluetooth Remote Control

According to the prompt, the user inputs "1+", confirms to delete all Bluetooth remote controllers added in the lock cylinder, press key or input other number keys + cancel operation.

(10).4+ Set Chinese

Input 1+ Select

"Input 1+ Switch to Chinese, Press or enter another number key + cancel operation"

(11).5+ Set English

Input 1+ Select

"Input 1+ Switch to English, Press or enter another number key + cancel operation"

(12).6+ Setup

1+ Turn off/on sound

Input 1+ to confirm the modification; press or enter another number key + cancel the operation

2+ Turn off/on Bluetooth

Input 1+ to confirm the modification; press the key or enter another number key + cancel the operation.

3+ Turn off/on NB

input 1+ to confirm the modification; press the key or enter another number key + cancel the operation.

4+ Lock time change

Enter 5~14 digits, press to confirm, after unlocking successfully, the lock cylinder waits for 5~14 seconds and then performs the lock. Factory default is 8 seconds.

5+ Restore to factory

According to the prompt, the user inputs "1+", clears all common passwords in the system, IC card, Bluetooth remote control, setting data and management password data, and managing password to restore default 123456. Press the key or enter another number key.

(10).USB Emergency spare key

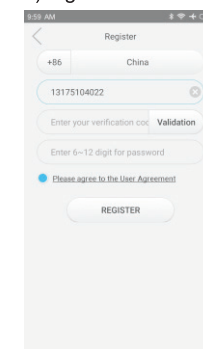
Open the QR code cover, use the USB port to power on, and connect the App to automatically unlock.

6.Download app by scan below QR code

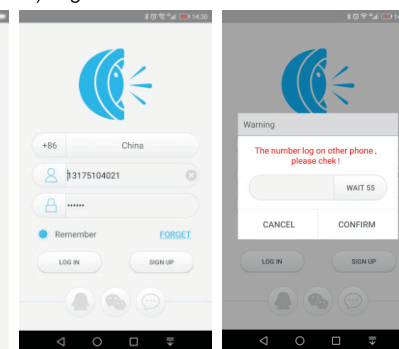


7.APP Operation

1).Sign in



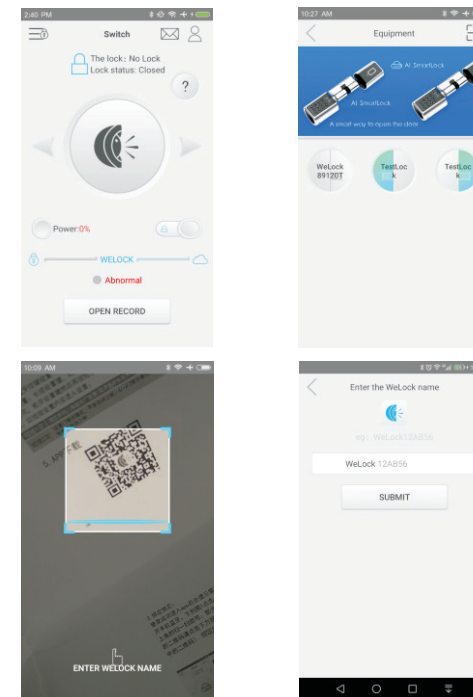
2).Log in



3). Binding lock cylinder:

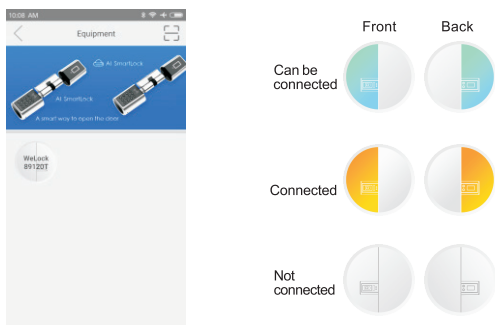
- Login into the app, prompt to turn on the phone bluetooth, then follow picture 1, Click to to enter picture
- then click the upper right corner icon to can to bind lock to app. If cannot scan due to some unknown reason, please click the hand icon in picture
- to manually input the numbers on QR code.

Binding to get management authority level.



4). Connect bluetooth of lock on app

Scan QR code to bind the lock cylinder on app, then click the lock to connect bluetooth; (If you don't unlock after connection, the bluetooth disconnects in 3 minutes automatically).



5). Unlock

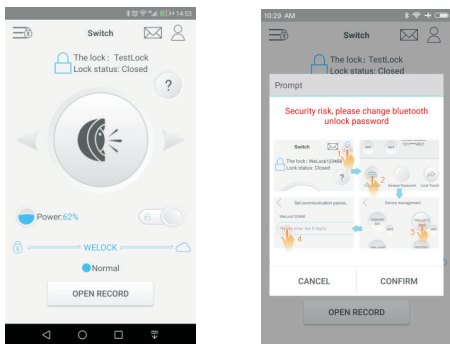
After connection click [lock icon] to unlock. (After 7 seconds unlock by Bluetooth, it will automatically disconnect, please re-connect Bluetooth to unlock again)



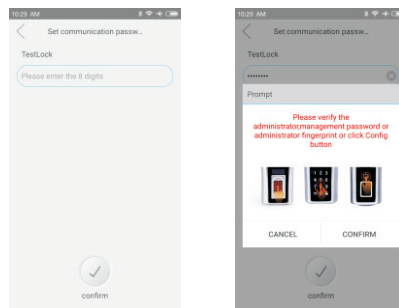
6). Revise the communication password

The original communication password is 12345678. Please be reminded to revise the password at the prompt instruction.

After setting the lock admin password, you cannot unlock until revise the APP communication password.



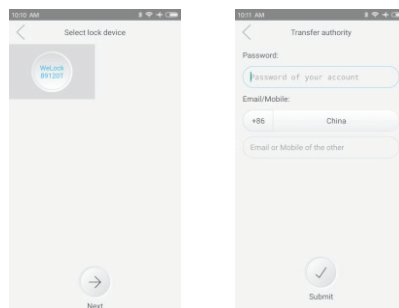
Revise Method: Click [person icon] after connection, then enter [password icon], click on the related setting area of lock, enter the password to verify if you revise the password successfully or not.



Verification: input admin password to confirm.

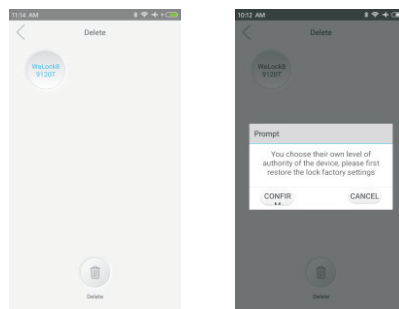
7). Transfer Permission:

Admin level right can be transferred to other persons, Click [share icon] to select the lock name, Click "Next" to input the phone number, then input "admin login password", click OK to transfer.

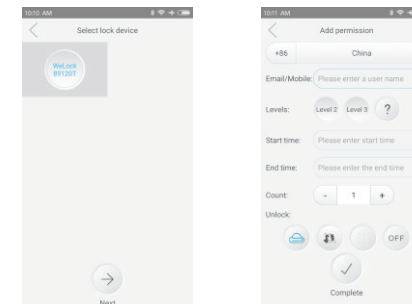


8). Unbind cylinder (admin rights)

Click [person icon] to enter Personal center; Then click [minus icon] and [trash icon] to choose the cylinder you want to delete; Click "confirm delete".



9). Add User Permission: Click [person icon] to enter Personal center; Then click [cylinder icon] to choose the cylinder you want to authorize; Click "Next" and enter user's account phone number, permission level, period and unlock times. Then click complete.



10). Help center



Click HELP, to enter Manual/ Installation video/Operation cases.

8. FAQ

Question: How about this lock? Is it perfect same as your advertisement? Is it safe with simple installation?

Answer: Provides a safe and convenient environment, 3 minutes installation, no need to replace the door or the panel only change lock cylinder.

Question: After change the lock cylinder, if the rotary knob back of the door still can double lock?

Answer: Yes, there is no affection for the original lock's other function.

Question: Which kind of battery is more durable?

Answer: The lock need to be putted in 3pcs AAA battery, and it is better to use more high quality batteries.

Question: There is many different houses, if we install the lock cylinder in each house, could we open all the door by the same App account?

Answer: Yes, we could open all the lock with the same APP account, please remember to remark the different name for each lock.

Question: If there is no power on outside lock, how could we do?

Answer: you could replace the new batteries directly for the front handle outside of the door.

Question: How to use temporary password

Answer: Click the Temporary Password button in the APP Settings menu [temp password icon], select the cylinder with the temporary password function, enter the temporary password generation interface, select the corresponding time to obtain the temporary password.

USB emergency backup key use steps are as follows :

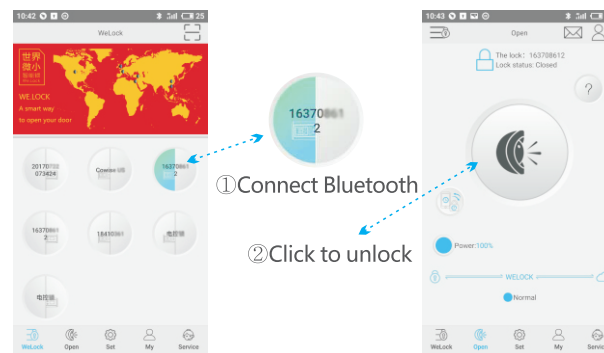
Step 1: Open the front handle QR code cover



Step 2: Plug the power bank(Micro-USB)



Step 3: Open the App and click "Unlock"



Note: 1.USB only supports App alternate unlock
2. After the USB is connected for more than 2 minutes, it needs to be reconnected.